



# *Professional Services Procurement Bulletin 2008-04 Jefferson County I-71*

<b>COUNTY</b>	<i>Jefferson</i>
<b>ROUTE</b>	<i>I-71</i>
<b>DISTRICT</b>	<i>5 - Louisville</i>
<b>ITEM NO</b>	<i>5-48.20</i>
<b>PROJECT DESCRIPTION</b>	<i>Preliminary Engineering, Final Design, and Environmental studies for the addition of NB and SB auxiliary lanes on I-71 and I-264 and/or modification of ramps along I-264 between I-71 and US-42.</i>
<b>PROJECT MANAGER</b>	<i>Paul Davis, P.E.</i>
<b>USER DIVISION</b>	<i>Highway Design</i>
<b>APPROXIMATE FEE</b>	<i>\$600,000 Preliminary Engineering and Final Design</i>
<b>PROJECT FUNDING</b>	<i>NH Federal Funds</i>
<b>PURPOSE AND NEED</b>	<i>Improve safety, traffic operation, and congestion.</i>
<b>PROJECT LENGTH</b>	<i>Approximately 2.2 miles</i>
<b>METHOD OF DESIGN</b>	<i>The selected consultant shall utilize the CADD Standards for Highway Plans (version 2.08) policy in the development of the Highway Plans.</i>
<b>DBE REQUIREMENT</b>	<i>The consultant team shall include a DBE Participation Plan with their response to announcement. An additional page will be allowed with the project approach in the Response to Announcement to convey this plan. A maximum of 4 points will be considered in the evaluation factors for the DBE Participation Plan.</i>

<b>SCOPE</b>	<i>The selected consultant will provide engineering services for Phase I and Phase II roadway design, including surveying, drainage design, traffic control, erosion control, Advanced Situation Folders, Corps of Engineers permit drawings, lighting plans, preliminary and final roadway construction plans with construction cost estimates and the preparation for approval of the appropriate environmental document. The environmental document at this time is expected to be CE.</i>
<b>SPECIAL INSTRUCTIONS</b>	<i>Phase II units will be negotiated at the end of Phase I after receiving environmental approval (CE document) and approved DES.</i>
<b>AVAILABLE STUDIES</b>	<u><i>Meeting Minutes - I-71 Improvements, Jefferson County, Item No. 5-48.01 &amp; 48.02 - Project Team Meeting - Public Informational Meetings - KYTC, District 5 Office, Louisville, Kentucky September 8, 2005</i></u>
<b>PHOTOGRAMMETRIC SERVICES</b>	<i>The Department will be responsible for obtaining aerial photography that is suitable for Phase I &amp; Phase II design.</i>
<b>STRUCTURE DESIGN</b>	<i>Structure Design to be performed by Consultant The selected consultant shall perform the necessary engineering services to submit to the Kentucky Transportation Cabinet an Advance Situation folder(s) for the appropriate applicable structure (s). Upon submission of the folder(s), the structure design may be performed by the consultant by contract modification. Pre-qualification in the area of structure design is required to be identified in the consultant's Response to Announcement.</i>
<b>GEOTECHNICAL SERVICES</b>	<i>Department</i>

<b>RIGHT-OF-WAY</b>	<i>The selected consultant shall identify property owners within the project limits. Property owner information shall be shown on the plans along with existing right-of-way and property lines.</i>
<b>TRAFFIC</b>	<p><i>The selected consultant shall utilize historical traffic information as available from the Traffic Counts System (CTS), which is accessible through the KYTC Division of Planning website: <a href="http://www.planning.kytc.ky.gov/data_reports.asp">http://www.planning.kytc.ky.gov/data_reports.asp</a></i></p> <p><i>For KYTC review and approval, the consultant shall provide a growth factor. Mainline and ramp traffic volume and class projections within the project limits shall be included by the consultant. The consultant shall conduct traffic volume counts including vehicle classification counts as required during phase II design. Data collected shall be provided in Department standard format.</i></p>
<b>ENVIRONMENTAL</b>	<i>The selected consultant shall provide the appropriate NEPA documentation. Pre-qualification in the area of Environmental is required to be identified in the consultant's Response to Announcement.</i>
<b>UTILITY DESIGN</b>	<p><i>The selected consultant shall send project location maps to all potential Jefferson County utility contacts to determine whether they may have existing utilities within these project limits. The Department will provide the utility contact list. Facility atlas maps shall be retrieved from each confirmed utility within the project limits. Aerial carriers shall be field-verified. Sizes and types of existing underground and aerial utilities shall be identified for each alignment alternative in the PL&amp;G submittal. Copies of pertinent facility atlas maps shall be provided with the PL&amp;G submittal.</i></p> <p><i>The Department will authorize B.U.D. (Before You Dig) to field-locate utilities during Phase II design. The consultant shall perform field surveys to collect the B.U.D. data. Horizontal locations of existing utilities shown on Phase II plans shall be adjusted as necessary to reflect actual B.U.D. locates.</i></p>
<b>MAP</b>	<p><u><i>Static Map</i></u>  <u><i>Interactive Map</i></u>  <u><i>Recommendations Area 2, Option A</i></u>  <u><i>Recommendations Area 2, Option B</i></u></p>

## *PREQUALIFICATION REQUIREMENTS*

### *ROADWAY DESIGN*

- *Rural Roadway Design*
- *Urban Roadway Design*
- *Surveying*

### *STRUCTURE DESIGN*

- *Spans < 500 feet*
- *Culvert Design*

### *TRANSPORTATION PLANNING SERVICES*

- *Traffic Forecasting*

### *TRAFFIC ENGINEERING SERVICES*

- *Electrical Engineering Services*

### *ENVIRONMENTAL ARCHAEOLOGY AND OTHER SERVICES*

- *Prehistoric*
- *Historic*
- *Highway Noise*
- *Air Quality*
- *Cultural Historic*
- *Environmental Document Writing and Coordination*
- *Socioeconomic*

### *AQUATIC/TERRESTRIAL ECOSYSTEMS*

- *Fisheries*
- *Macroinvertebrates*
- *Water Quality*
- *Botany*
- *Zoology*
- *Wetlands*

### *HAZMAT/UST*

- *Preliminary Site Assessment*

*PROJECT SCHEDULE & MILESTONES*

<i>RESPONSE DATE</i>	<i>November 14, 2007 4:30 p.m. (Frankfort Time)</i>
<i>SELECTION COMMITTEE MEETING</i>	<i>December 5, 2007</i>
<i>PRE-DESIGN CONFERENCE</i>	<i>December 19, 2007</i>
<i>TENTATIVE DEADLINE FOR CONSULTANT FEE PROPOSAL</i>	<i>January 9, 2008</i>
<i>CONTRACT NEGOTIATIONS</i>	<i>February 6, 2008</i>
<i>NOTICE TO PROCEED</i>	<i>April 9, 2008</i>
<i>PDT PROJECT KICK-OFF MTG</i>	<i>June 1, 2008</i>
<i>PDT EARLY STATUS REVIEW MTG</i>	<i>August 1, 2008</i>
<i>ALT ALIGNMENTS READY FOR PDT MTG</i>	<i>October 1, 2008</i>
<i>PDT MTG (DISCUSS ALT ALIGNMENTS)</i>	<i>December 1, 2008</i>
<i>PL&amp;G INSP MTG (PDT DECIDE PREFERRED ALT)</i>	<i>February 1, 2009</i>
<i>SUBMIT ENVIRONMENTAL DOCUMENT AND DES</i>	<i>April 1, 2009</i>
<i>PHASE I PLANS ELECTRONIC SUBMITTAL</i>	<i>May 1, 2009</i>
<i>DRAINAGE AND PHASE II PLANS-IN-HAND INSPECTION</i>	<i>August 1, 2009</i>
<i>SUBMIT PHASE II REVIEW PLANS</i>	<i>February 1, 2010</i>
<i>FINAL ROADWAY PLANS SUBMITTAL</i>	<i>June 1, 2010</i>
<i>FINAL STRUCTURE PLANS SUBMITTAL</i>	<i>June 1, 2010</i>
<i>FINAL PLANS ELECTRONIC SUBMITTAL</i>	<i>August 1, 2010</i>

*The selected consultant is expected to meet the scheduled milestone dates*

## EVALUATION FACTORS

1. *Relative experience of consultant personnel assigned to project team with highway projects for KYTC and/or for federal, local or other state governmental agencies. (10 points)*
  2. *Capacity to comply with project schedule. (10 points)*
  3. *Past record of performance on projects of similar type and complexity. (10 points)*
  4. *Project approach and proposed procedures to accomplish the services for the project. (10 points)*
  5. *DBE Participation Plan (4 Points)*
  6. *Consultant's Kentucky office where work is to be performed. (2 points)*
- 75% - 100% of work accomplished in Kentucky offices - 2 points*
- 26% - 74% of work accomplished in Kentucky offices - 1 point*
- 0% - 25% of work accomplished in Kentucky offices - 0 points*

### **SELECTION COMMITTEE MEMBERS**

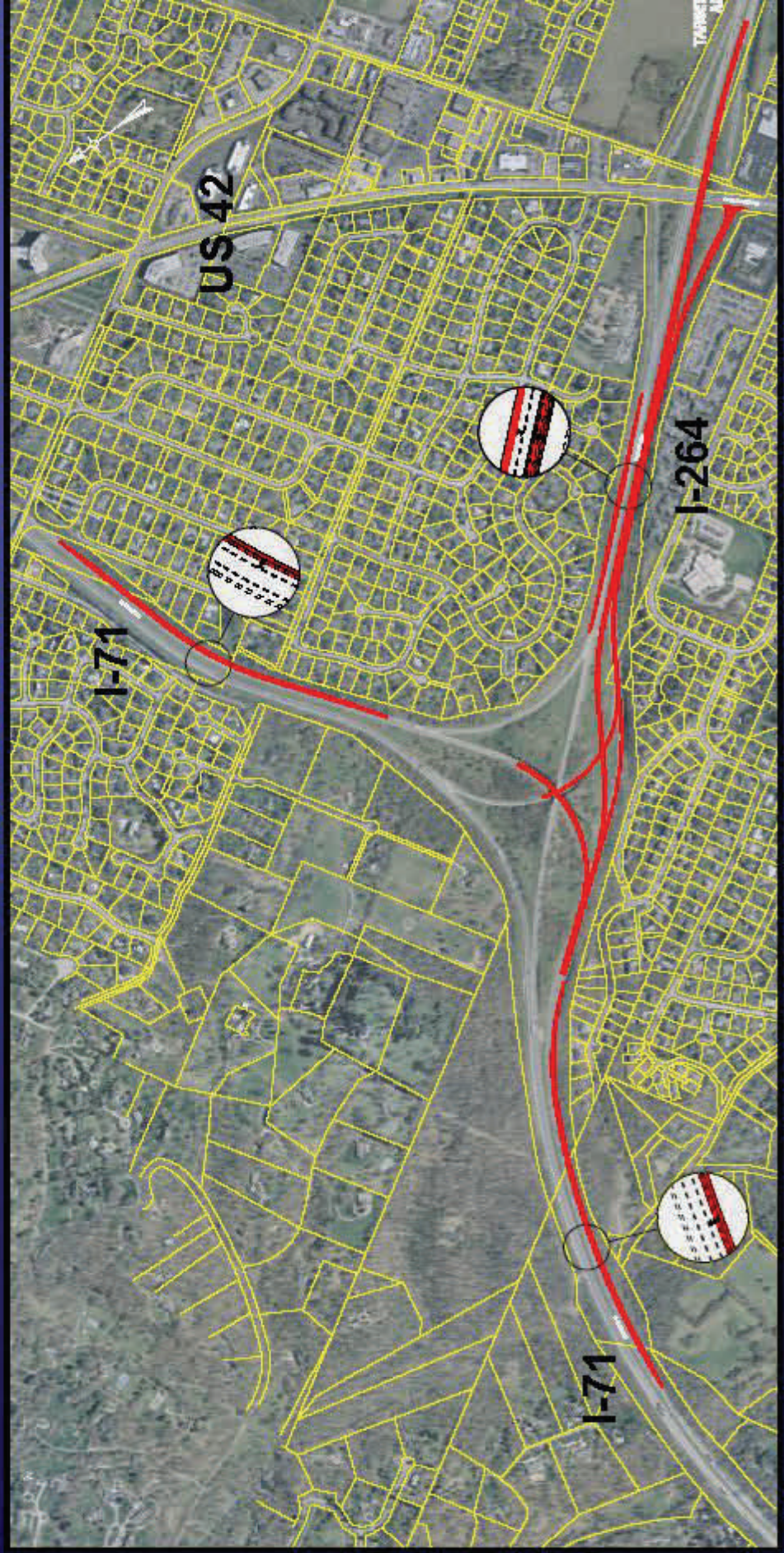
1. *Paul Davis, P.E., User Division*
2. *Bob Farley, P.E., User Division*
3. *Ted Merryman, Secretary's Pool*
4. *Stuart Goodpaster, Secretary's Pool*
5. *George Blandford, Governor's Pool*



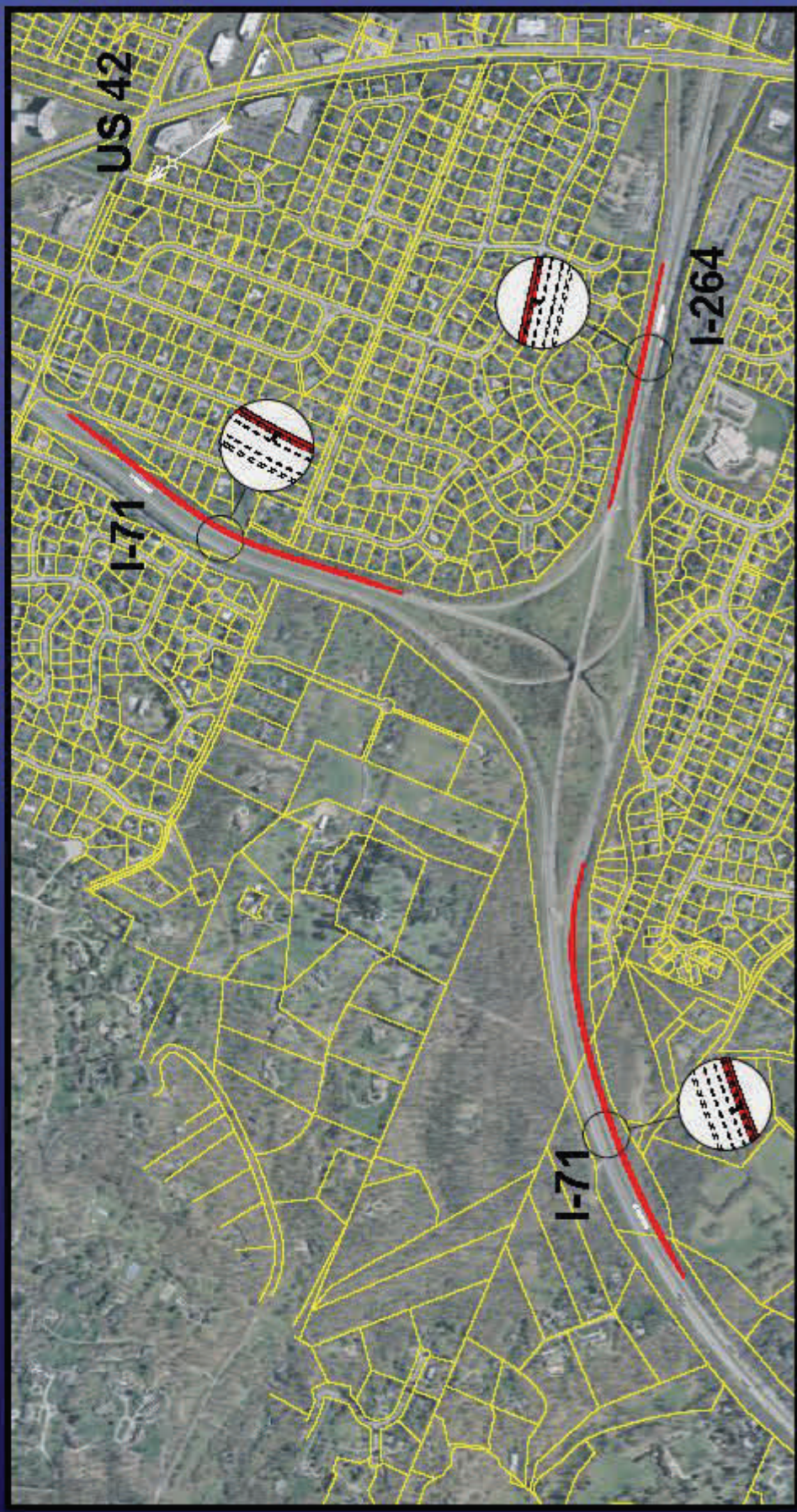
*Addition of NB and SB auxiliary lanes on I-71 and I-264 and/or modification of ramps along I-71 and US-42.*

*Jefferson County, Kentucky*

*Item Number 5-48.20*



# Recommendations – Area 2, Option A





# Recommendations – Area 2, Option B

